

2002 Alpine - EcoLuxury Revolution

QuickFacts	1
The Architect	2
The Builders	2
The Location	2
The Floor Plans	3
The Images	4
The EcoLuxury Revolution	5
Frequently Asked Questions	5
Contact	6

QuickFacts

2002 Alpine is the United States' first ever American-designed, German engineered hyper ecoluxury urban home in the US. Located in the heart of Boulder, Colorado, this residence represents a break in tradition with nearly every convention in contemporary homebuilding. The result? A perfectly-appointed home that will forever change the way we relate to our homes and our Earth.

Completion May 2010. Completed in less than one year, this project represents significant energy and cost savings that contribute to its sustainable profile.

Building Size 5,160 square feet (inclusive of garage); 4,335 square feet (exclusive of garage). Three-story construction with garage and rooftop terrace.

Site Description 2002 Alpine is located in the heart of urban Boulder, Colorado. Positioned on a hillside, the property features unparalleled views of the Flatirons and offers easy access to nearby shopping, medical facilities, major highways, and recreation.

Highlights Designed in America by award-winning Boulder-based architect Studio H:T, 2002 Alpine was engineered in Germany's cutting-edge WeberHaus factory, assembled on-site by Vireo, and features custom finishes from the world's most reputable suppliers.

Design: The home's contemporary design incorporates its perfectly-appointed views and sustainable outlook, featuring stunning full-sized windows, warm sandstone and clay interiors, European-inspired open spaces, and hyper-modern finishes. From its rooftop terrace with photovoltaic solar panels to its showpiece kitchen, luxurious master suite, theater room, and wine cellar... 2002 Alpine does not scrimp on a single detail.

Construction: 2002 Alpine was constructed by WeberHaus, which sourced the home's bespoke timber from consciously-managed forests and engineered its components in a climate-controlled precision factory environment. Built for an eco-friendly lifetime, 2002 Alpine's interior is entirely hypoallergenic and non-toxic. Its cutting-edge CAD-CAM construction process resulted in hyperprecision ($\pm 1/2''$ over a 100-foot span) while creating only 2% waste on average (as compared to the usual 17% waste generated by construction on an average home in the US). The first Colorado home pressure-tested to 100 psi, 2002 Alpine promises to use a mere 18% of the typical energy consumed by America's average home.

Suppliers:

WeberHaus:	Structure	Zeyko:	Kitchen
Kleinhans:	Windows/Doors	Earthworks:	Clay Walls
Gaggenau:	Appliances	Pontos AquaCycle:	Gray Water Treatment
Lighthouse Solar:	Solar array	Modern Flames:	Fireplaces

Hyperluxury: Who says luxury and sustainability can't mix? 2002 Alpine challenges every assumption about green building, refusing to sacrifice perks for performance. This eco-friendly home offers unparalleled performance per square foot, but its true value lies in its eminently livable, extravagantly luxurious appointments.

The Architect

Studio H:T is a Boulder, Colorado-based design studio that seeks to create buildings, objects, and environments that heighten the senses while celebrating the unique qualities of place. Committed to the sustainable principles represented by the USGBC's LEED program, Studio H:T puts its values into practice with cutting-edge residential, commercial, and spiritual projects that incorporate next-generation technologies with functional, livable design.

Recent awards include:

- 2010 AIA Colorado Young Architect of the Year
- 2009 AIA Western Mountain Region Young Architect Of The Year
- 2009 AIA Innovative Practice Award
- 2008 AIA Colorado North Chapter Merit Award - [32nd Street]
- 2008 AIA Colorado Citation Award - [Shipping Container House]

Studio H:T

1445 Pearl Street, Suite 208

Boulder, CO 80302

303.247.0405

www.studioht.com

The Builders

Specializing in state-of-the-art luxury construction, **Vireo** brings eco-intelligence home with a turn-key approach to luxury homebuilding. Melding environmentally sustainable materials with sophisticated design, Vireo's homes meld seamlessly with their surroundings. The result? Quality that's truly second nature.

Vireo

1035 Pearl Street, Suite 400

Boulder, CO 80302

877.BY.VIREO (298.4736)

www.vireovision.com

Quality. Innovation. Environment. **WeberHaus** builds the future with energy-efficient, sustainable home construction. From its consciously-managed forests to its Porsche-designed factory systems, WeberHaus offers German precision engineering from start to finish...and its commitment to cutting-edge techniques and tailor-made building practices delivers homes built for generations to come.

WeberHaus

Am Erlenpark 1

Rheinau 77866 Germany

(+49) 07853 83 462

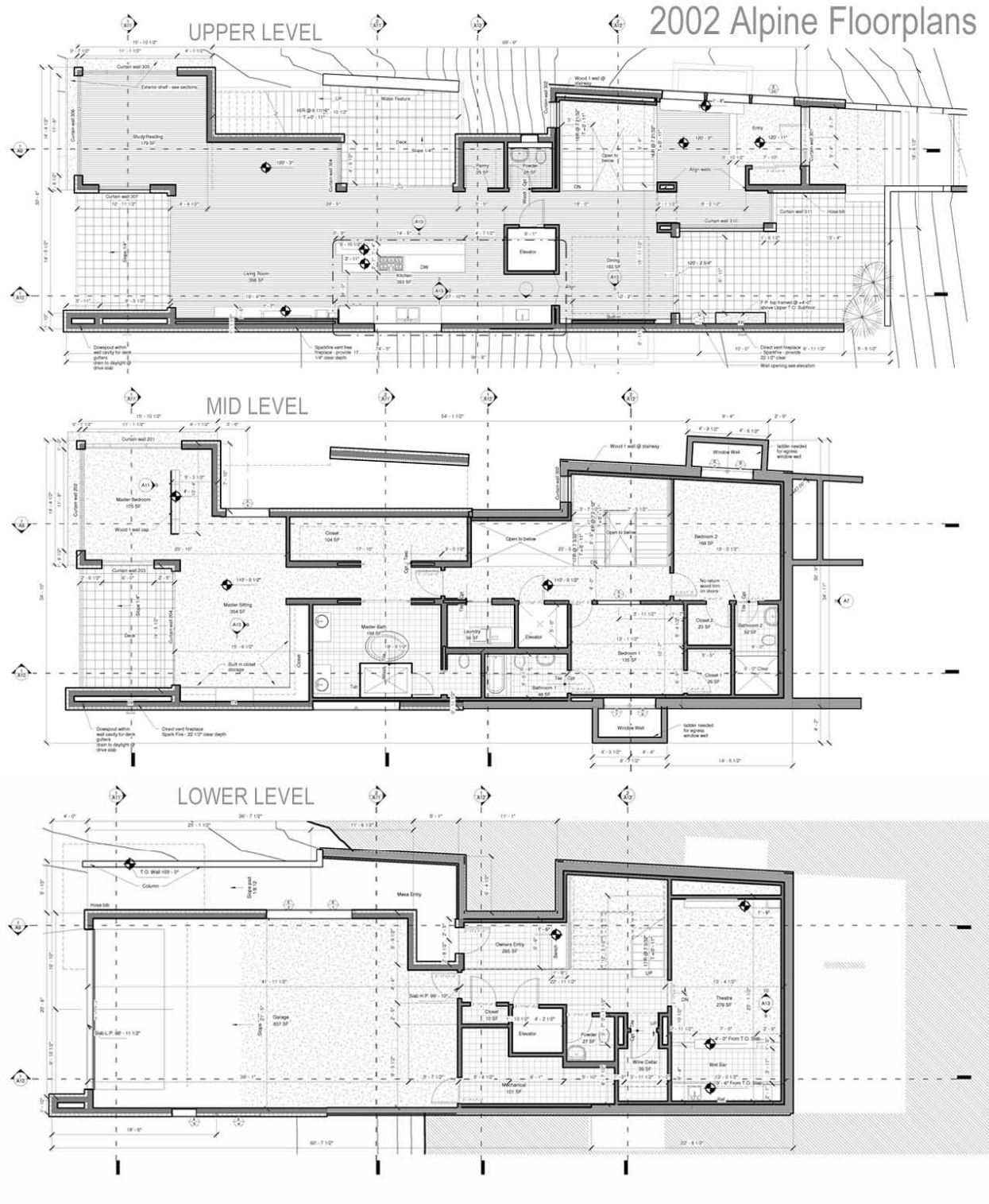
www.weberhaus.co.uk

The Location

2002 Alpine is located in the heart of Boulder, Colorado, a city consistently recognized for its healthy lifestyle, year-round recreational opportunities, and a long-term commitment to sustainable living. This city of approximately 100,000 residents is nestled at the base of the Rocky Mountains and was recently named Happiest and Healthiest City by Gallup-Healthways' Well-Being Index and America's Smartest City by Forbes Magazine.

The Floor Plans

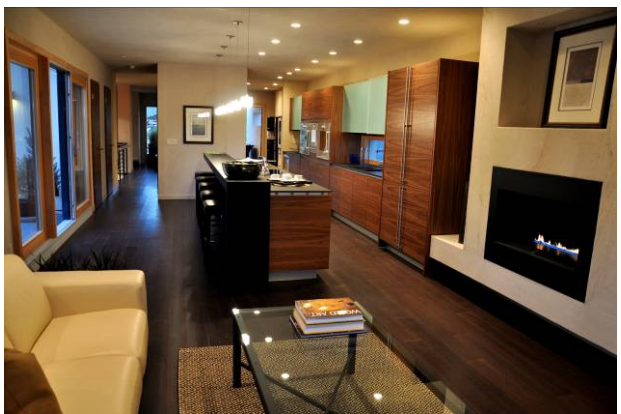
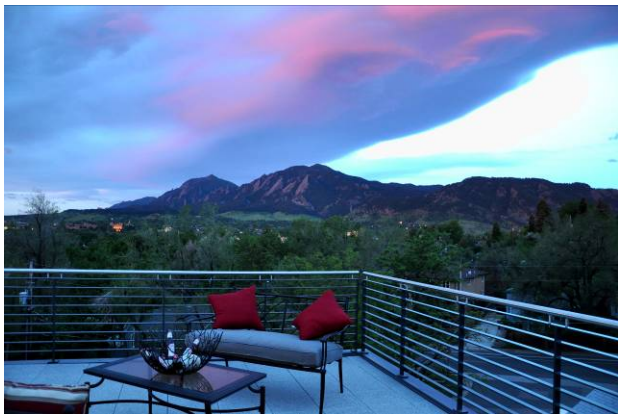
For complete floor plans, please visit www.2002alpine.com/press



1445 PEARL STREET, SUITE 208 | MOULDER, CO | P 303.247.0405 | F 303.247.0415 | WWW.STUDIOHIT.COM
STUDIO H I T

The Images

For high-resolution images and video, please visit www.2002alpine.com/



The EcoLuxury Revolution

Think luxury and green don't mix? Think again. 2002 Alpine is the first foray in an EcoLuxury Revolution...a movement to meld the good life with the green life through stunning properties that can save the world.

The Myth

Traditional thinking tells us that luxury and sustainability can't play nice...that we must sacrifice precious amenities in favor of poorly defined "green" goals. In order to be good to the Earth, the myth says, we must compromise, living in homes that are small, simple, rustic, and oddly-designed. Conventional wisdom makes excuses for tired, inefficient construction techniques and loosely-defined standards that lead to green washing and fuzzy numbers as to a house's true impact on the world around it.

The Truth

Elegance, spaciousness, and livability can coexist in high-performance ecoluxury homes! 21st century problems call for 21st century solutions...and the solution is in the EcoLuxury Revolution. Think about it...the average modern home is built for a 20-year life span, but Vireo homes are built to 100-year standards, require approximately one fifth of the energy of the average home, and are carbon-neutral or even carbon positive. The secret is in the specifications – exacting standards that coexist with stringent third-party verification to create efficient construction processes and second-to-none performance in a luxurious setting.

The Living Proof

2002 Alpine is living proof that the EcoLuxury Revolution is here to stay. Built in mere months, this gorgeous, well-apportioned home is the first American-designed, German-engineered ecoluxury home built in the United States. From its Porsche-designed factory systems to its revolutionary precision CAD-CAM construction system, 2002 Alpine was built to bring maximum efficiency to a residence that is stunning and elegant in its location, finishes, and attention to detail.

Frequently Asked Questions

Why must the entire home construction process be changed? Can't small steps improve energy efficiency?

No! Half-measures won't accomplish true high performance for luxury homes. Breakthrough performance can only be accomplished through minute tolerances and precision engineering like that employed in the construction of 2002 Alpine.

What kind of carbon footprint do Vireo homes have?

Vireo design and construction means that our luxury homes require 1/5 or less the energy of the average American home.

What kinds of timelines are associated with Vireo homes?

Time is money...and wasted time means wasted energy. Construction times on Vireo homes are very short, allowing even the most luxurious residences to be built in a matter of months – and skilled team members mean higher quality in the long run.

What kind of performance per square foot do Vireo homes offer?

Vireo homes offer iconic style, construction for the centuries, and use a fraction of the energy associated with conventional construction. In energy savings alone over decades, our homes pay for themselves many times over. Add environment cost to the equation, and the real financial impact of Vireo homes shrinks even further.

Are your claims to energy-efficiency legitimate?

Absolutely! Unlike some builders that "green wash" homes with a few cosmetic green tweaks, Vireo's relies on specific definitions and third-party performance verification to ensure our homes' energy efficiency.

Contact

Enhanced press kit available at www.2002alpine.com/press

2002 Alpine Project Website: www.2002alpine.com | EcoLuxury Revolution: www.ecoluxuryrevolution.com

Press Inquiries

Trish Thomas
Trish Thomas Consulting
press@2002alpine.com
office: 303.678.5000
mobile: 720.224.4923

2002 Alpine Inquiries

David Scott
Colorado Landmark Realtors
dwscott@coloradolandmark.com
2350 Broadway, Boulder, CO 80304
office: 303.588.8358 | fax:303.444.0720

Studio H:T

1445 Pearl Street, Suite 208
Boulder, CO 80302
303.247.0405
www.studioht.com

Vireo

1035 Pearl Street, Suite 400
Boulder, CO 80302
877.BY.VIREO (298.4736)
www.vireovision.com